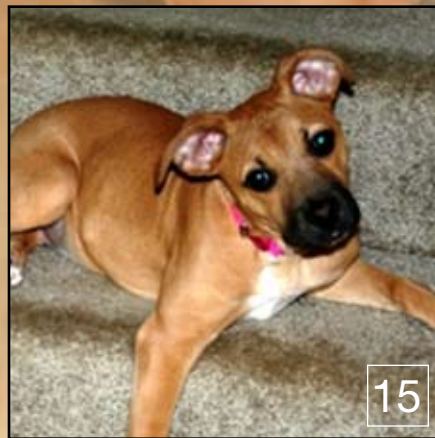
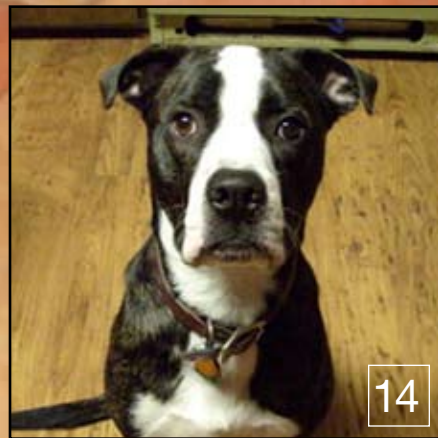
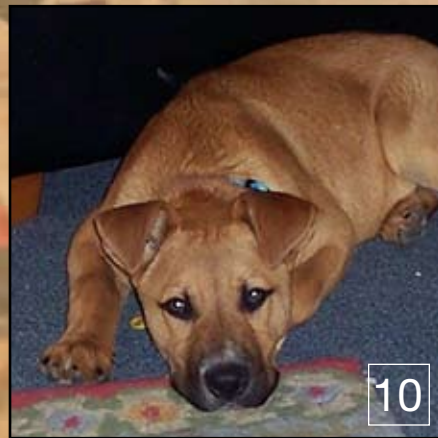
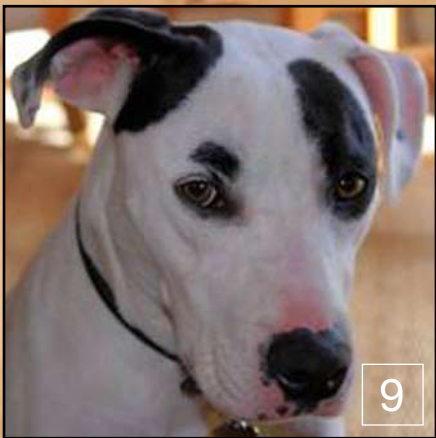
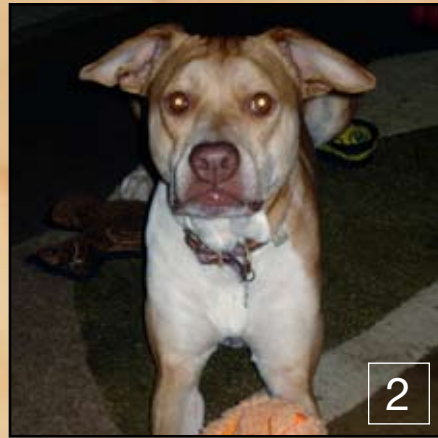


DO YOU KNOW A "PIT BULL" MIX WHEN YOU SEE ONE?

EACH OF THESE DOGS WAS GIVEN A DNA BLOOD TEST TO DETERMINE MIX OF BREEDS

One has a **SIGNIFICANT** amount of a breed commonly labeled "pit bull", one has **SOME** "pit bull" and one has **DISTANT TRACES** of "pit bull".



Tested with Mars Wisdom Panel™ MX by their owners: www.wisdompanel.com

Significant 50% or more, Some 25%-49%, Distant 12.5%-24%



Animal Farm Foundation, Inc.
www.animalfarmfoundation.org

1. significant Boxer with some Bulldog 2. distant traces of Smooth Fox Terrier 3. significant Chihuahua with some Cocker Spaniel 4. some Rottweiler and Boston Terrier 5. some German Shepherd Dog and distant traces of Affenpinscher 6. some Chinese Shar-Pei and distant traces of Rottweiler 7. some American Staffordshire Terrier and Australian Cattle Dog 8. distant traces of Basset Hound, Dalmatian and Pug 9. significant American Staffordshire Terrier and distant traces of Boxer 10. some German Shepherd Dog and distant traces of Basset Hound, Norwegian Elkhound and Samoyed 11. distant traces of Basset Hound, Dalmatian, Glen of Imaal Terrier, Staffordshire Bull Terrier and Wire Fox Terrier 12. some Rottweiler and distant traces of Clumber Spaniel, German Wirehaired Pointer and Newfoundland 13. some Boston Terrier and distant traces of Bulldog 14. distant traces of Borzoi, Brussels Griffon, Dachshund, English Cocker Spaniel and Samoyed 15. some Boxer and distant traces of Bernese Mountain Dog, Briard, Dalmatian and Welsh Springer Spaniel 16. distant traces of Beagle, Boxer, Bulldog, Chesapeake Bay Retriever, Dalmatian, Mastiff and Whippet